

# ClearRead Xray | Compare

*Clinical AI in Action.*

## Building Confidence Through Enterprise Imaging

Riverain Technologies' ClearRead Xray | Compare provides a clear view of changes in density between current and prior chest X-ray images. With no additional radiation dose to the patient or changes to existing imaging protocols, clinicians can discover the most subtle changes safely and effectively. Compare enhances the detection of subtle change by registering and comparing current and prior soft tissue images, allowing earlier disease detection and improved patient outcomes.

Using Riverain's ClearRead Xray | Bone Suppress as a foundation, Compare registers the prior soft tissue image with the current soft tissue image to achieve unprecedented accuracy. The difference image is automatically inserted into the patient's existing file and seamlessly displayed on the existing PACS review station.

A multi-reader, multi-case, clinical trial showed that the use of Compare led to a 12.4% improved detection rate for lung nodules.<sup>1</sup>

## Key Advantages of ClearRead Xray | Compare

- Helps radiologists identify subtle differences between exams
- Provides a 12.4% sensitivity improvement in the detection of hard to find nodules<sup>1</sup>
- Facilitates faster comparison of current and prior studies
- Highlights increases and decreases in density
- Allows current and prior images to be processed from different imaging devices, facilities, and time periods
- No additional radiation dose or changes to existing imaging protocols are required
- Seamlessly interfaces with the existing PACS review stations
- Automatically inserts image into the patient's file for easy access
- Easy, one-click access to a registered prior, soft tissue image and/or difference image
- FDA cleared

### ClearRead Xray | Compare



Original Current Chest X-ray



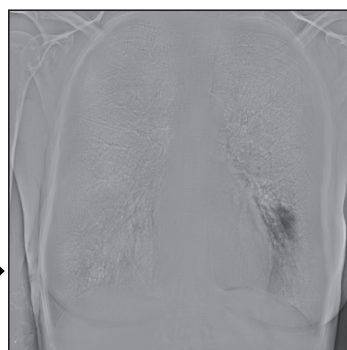
Original Prior Chest X-ray



Original CRBS Image



Warped, Prior CRBS Image



ClearRead Xray | Compare

\* CRBS is the ClearRead Xray | Bone Suppress image

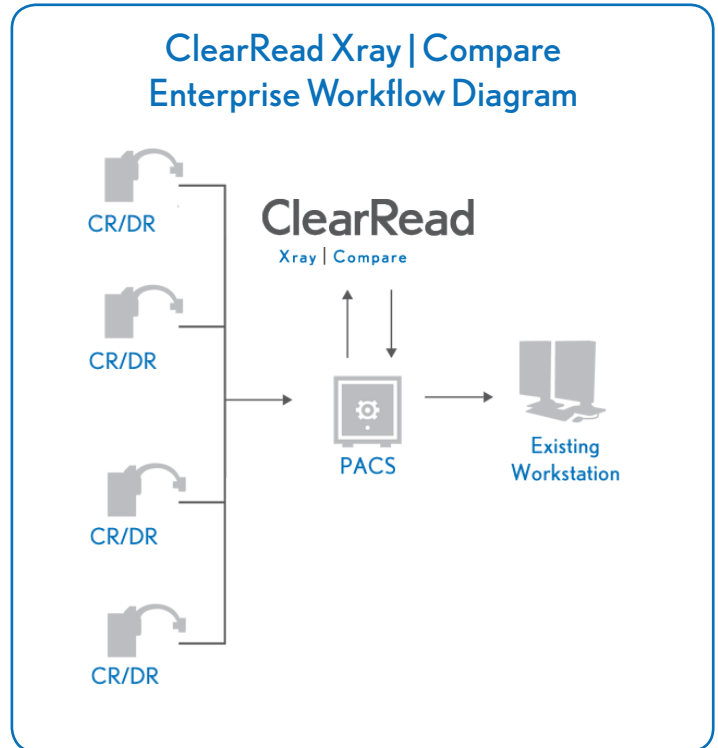
# 1 in 10

Detect 1 in 10 previously missed emerging nodules with the use of ClearRead Xray | Compare

Compare automatically generates the temporal comparison image and places it in the patient file, providing one click access to a clinically validated image that standardizes comparisons between the patient's current and prior exams.

“Computer analysis and artificial intelligence are tools to help radiologists, not replace them, and radiologists should take full advantage of them. The opportunity is for radiologists not to rely solely on their visual skills but to use computer tools to enhance and improve their capabilities.”

- Dr. Cornelia Schaefer-Prokop, Meander Medical Center, Amersfoort, Netherlands



\* Modality licensing is also available

## About Riverain

Riverain Technologies is a medical software innovator that develops solutions to aid radiologists in the early detection of disease. With the use of Riverain's ClearRead Xray and ClearRead CT product suites, radiologists are able to optimize the use of existing equipment for enhanced image interpretation. This enables radiologists to better utilize their diagnostic expertise for identification of diseases, such as lung cancer.

## References

1. Riverain Medical DeltaView FDA 510(K) Reader Study Results 2011